

HPE GreenLake Provides The Full Spectrum of HPE Solutions

Discover how.

Navigating Your Document

See what's inside.

Navigating This White Paper

67% of IT leaders in a recent study cite demands of their IT infrastructure as a top driver of their digitalization journey.¹

INTRODUCTION

[Benefits Of HPE GreenLake](#)

[Data Storage](#)

[File Storage](#)

[Block Storage](#)

[Data Resiliency](#)

[VDI For Remote Workers](#)

[Consume Private Cloud On Demand](#)

[Networking](#)

[Compute Ops Management](#)

[Conclusion](#)

SOURCES



**Hewlett Packard
Enterprise**

Introduction

Introduction

Change is always constant.

If you review how IT has changed over the past half century, you see a natural progression of development in which one paradigm leads to another. The era of networking took hold in the 1980s as companies began to share resources and data across multiple computers using a LAN. The World Wide Web accelerated the importance of networking as information was now shared across the Internet. This led to server sprawl, which was solved with the proliferation of server virtualization. Virtualization then became the launch point for cloud computing, which allowed businesses to hasten their digital transformations and transition to an OPEX model to fund IT.

And thus, here we are, working through the complexities that hybrid architectures have created because not everything resides in the cloud. Today, we have too many locations, too many vendors, too many admin consoles and too little time for overburdened IT teams to keep up. As a result, the IT world is on its way to the next paradigm shift – the IT consumption model – and HPE GreenLake is standing front and center.

Also referred to as *IT-as-a-Service* or *consumption-based IT*, the IT consumption model refers to the way IT services are delivered and consumed by a business or organization. It allows businesses with an on-prem footprint to harness the benefits of the cloud. It is the next logical step in progressing from owning and maintaining physical assets and moving to a highly flexible and service-oriented approach for all network components. That includes computer, networking, storage, data protection, and so much more.



Welcome To HPE GreenLake

“We choose to go to the moon.”

In June 2019, HPE created its “we choose to go to the moon” moment. The company publicly announced plans to transition itself to an as-a-Service company. The vision was to provide HPE customers with the ability to acquire IT with a pay-per-use subscription model. This placed the agility of the cloud front and center, with the self-assurance of still having things on prem. It is the best of both worlds as HPE GreenLake has earned a reputation of innovative leadership when it comes to servers, storage solutions, networking appliances, and associated services. In other words, whichever facet of HPE you purchased in the past, you can now consume it.



Hewlett Packard Enterprise CEO Antonio Neri

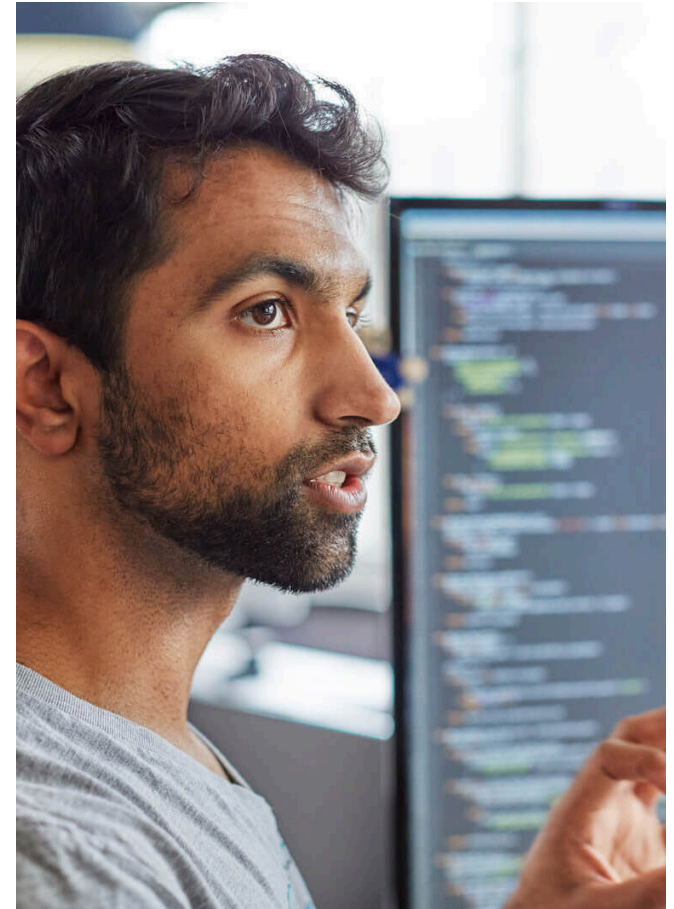
Benefits of HPE GreenLake

The Benefits Of HPE GreenLake

Your business first embraced server virtualization to reduce the expensive practice of overprovisioning server infrastructure while also retaining capacity for the future. Now, HPE GreenLake lets you apply that practice to all network components while achieving other benefits as well.

Benefits Include:

- Implement in-place scalability and on-demand processes to stay ahead of business demand, while only paying for what you use.
- Leverage best-of-breed security controls for data that must be stored on-prem to meet regulatory compliance.
- The convenience of a single support portal for all your devices, eliminating the complexity of toggling between multiple admin consoles and the security gaps it creates.
- Optimize skills sets within your organization by offloading management designated data center components to HPE GreenLake support experts.
- Focus IT talent on core business operations rather than perpetual maintenance tasks, upgrades, and refresh cycles.



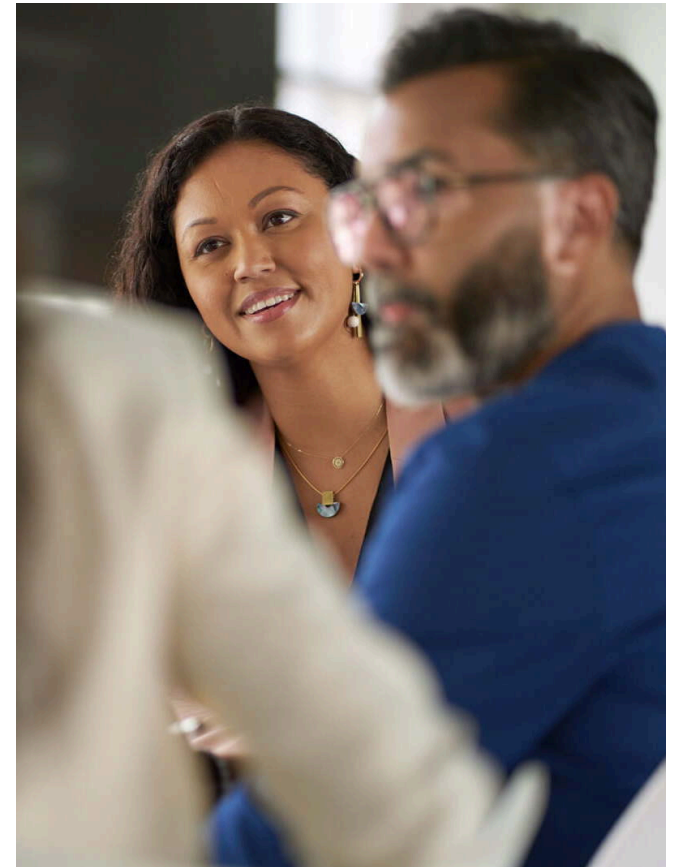
Data Storage

Data Storage

Businesses are data-driven.

This means data accuracy and integrity are critical. However, this becomes a real challenge when data is pulled from multiple sources, especially within highly collaborative work environments. That's why a Single Source of Truth (SSOT) is important because when an organization's end users each refer to the same data source, it reduces the risk of data discrepancy and errors. It also improves operational efficiency as the need to cross-check information across different systems or databases is eliminated.

At best, accessing and managing data across on-prem data centers, public clouds, colocations, and multiple edge sites is challenging. Data should not be penalized by where it was created. HPE GreenLake can unify all the data dispersed across your organization to deliver high-precision analytics that leverage and unlock greater value from it, even siloed data. It is called turning disarray into intelligence by freeing your data, combining it, and establishing an SSOT.



File Storage

File Storage

File storage is the most basic concept of data management.

HPE GreenLake enables you to keep file storage resources close to where they are needed, thus improving latency performance versus a total cloud-based solution. The flexible, disaggregated modular architecture that HPE GreenLake delivers is designed for exabyte scale and delivers with all-NVMe performance across your entire enterprise. There is no front-end caching or data movement between media. The highly resilient design of the platform reduces the risk of data disruption, and its future-proof architecture eliminates the need for elongated forklift upgrades or platform migrations.

Like all HPE GreenLake services, storage management and file share creation take place within a single console portal that provides a self-service cloud experience accessible from anywhere. You can also natively integrate with other HPE GreenLake offerings such as backup and recovery, archiving, and disaster recovery to ensure data can be quickly recovered from multiple incident types.

Remember, you don't pay for the storage infrastructure at large, but only for what you use. You can start out with the minimum number of storage nodes to service your immediate needs and then add additional controllers or storage nodes as needed through a totally non-disruptive process. Investment protection is ensured through data-in-place upgrades that occur in the background. Cost reduction innovations include a unique similarity algorithm that achieves superior data compression and deduplication to ensure that storage space is fully maximized and while minimizing cost.

With HPE GreenLake, your data scientists do not have to be storage experts with detailed understandings of legacy file systems and intricate setup processes. Why? HPE GreenLake data experts do all the heavy lifting for you and handle required data operational tasks. But while you may not be burdened with management duties, you still maintain control over the data environment and meet regulatory requirements for data security and privacy.

Block Storage

Block Storage

Data-driven applications are worthless if the data isn't available to them.

HPE GreenLake Block Storage provides an unrivaled data guarantee of 100% that is built-in for mission-critical environments.² It also boasts an industry leading 99.9999% uptime for other workloads.³ You also don't need a block storage admin specialist, because unlike traditional storage solutions and storage-as-a-service options, procurement and provisioning is practically effortless with no learning curve required. No one will have to know what a LUN is anymore – simply select the storage tier and workload type, specify the capacity and protection policy, and you are off to the races using AI-driven intelligence.

HPE GreenLake Block Storage runs on autopilot thanks to its AI Ops infrastructure and autonomous operations. No need to interpret what prescribed metric alerts are signifying as AI predicts, alerts, and prevents disruptions before reaching an impactful scenario. You also have direct access to product engineers that are trained and certified on your storage platform. Once again, it all runs on a unified management interface that gives full visibility into what is going on within the global storage environment.



Data Resiliency

Data Resiliency

Does the threat of ransomware keep you up at night?

Concerns over ransomware and other similar threats can be greatly diminished with HPE GreenLake Storage. Whether your data resides on VMware VMs, Amazon EBS volumes or EC2 instances, you can ensure that all data is backed up without the hassle of dealing with cloud gateways, backup software, client agents, proxies, or media servers.

Backups are stored outside of your production environment, thus creating the ultimate airgap to protect your backups from attack. Backups are also encrypted and utilize immutable storage and dual authorization to further increase their resistance to ransomware or other data-altering attacks. Furthermore, continuous data protection (CDP) enables recovery in minutes from any type of attack while granular restore capabilities allow users to easily recover a file inadvertently deleted or modified by an authorized user.



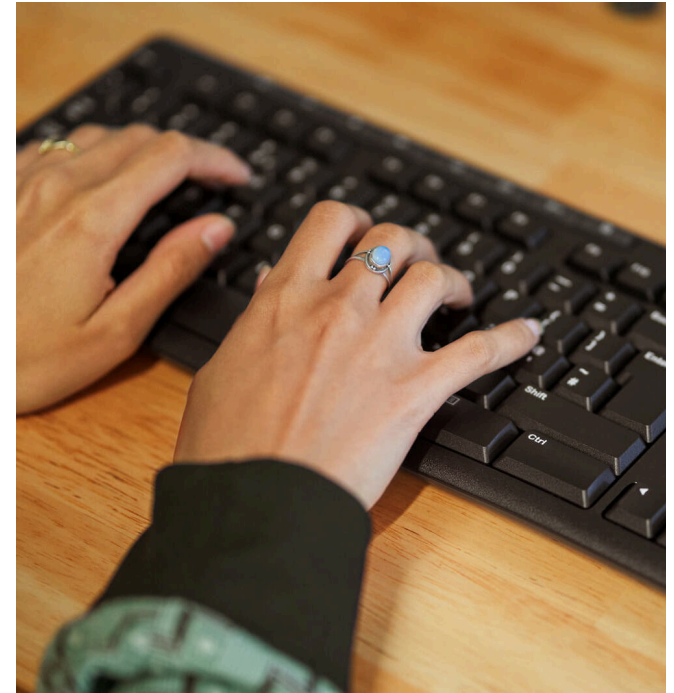
VDI For Remote Workers

VDI For Remote Workers

The hybrid work model is here to stay.

Users need an enterprise-grade computer that is accessible both on and off-prem. While a company laptop may be ideal for some, they can be overkill for task workers that typically use a small number of low intensity applications. At the same time, engineers have intensive graphic requirements that can only be serviced by NVIDIA GPU-assisted computers. Instances such as these is where HPE GreenLake's VDI solution makes sense.

HPE GreenLake for VDI uses a consumption-based pricing model so you only pay for the resources consumed, and capacity can be easily scaled up or down to meet changing demand. It is a hybrid cloud solution that combines cloud computing with the security and control of on-prem infrastructure because the involved setup is deployed by HPE VDI professionals into your data center or colocation facility. This reduces latency when users are in the office, while still providing access remotely. Customers can also choose to host their Citrix-based or VMware-based VDI solution in the public cloud as well. With HPE GreenLake for VDI, users can access their enterprise desktop application using whatever computing device they have at the time.



Consume Your Own Private Cloud On Demand

Consume Your Own Private Cloud On Demand

Many organizations want to deliver a cloud operational experience for their on-prem VMs.

HPE GreenLake for HCI gives customers an on demand, self-service cloud solution wherever needed, whether it be a data center or multiple edge locations. No more worrying about over or under provisioning because HPE HCI experts correctly size your environment and make it easy to increase or reduce capacity on demand. Once again, you only pay for what you consume.

A single console provides one-stop management that enables you to deploy, manage, upgrade, and monitor any VM within your hybrid environment without excess training. VM-automated provisioning deploys new machines in autonomous fashion, while the easy-to-use self-service portal allows you to change resource assignments with just a few clicks of the mouse. The provided platform provides the resiliency of 99.9999% data availability and with HPE GreenLake HCI support, you can connect with an engineer with the expertise necessary to resolve the issue right away.

When you add up all the benefits such as deployment speed, simplified operations, dynamic scalability, cost efficiencies, optimized performance and delegated HPE GreenLake managed services, it is easy to understand how your business can achieve faster time-to-value from your IT investments. If your organization has been priced out of the private cloud market due to capital limitations, HPE GreenLake's consumption model is a potent alternative solution.



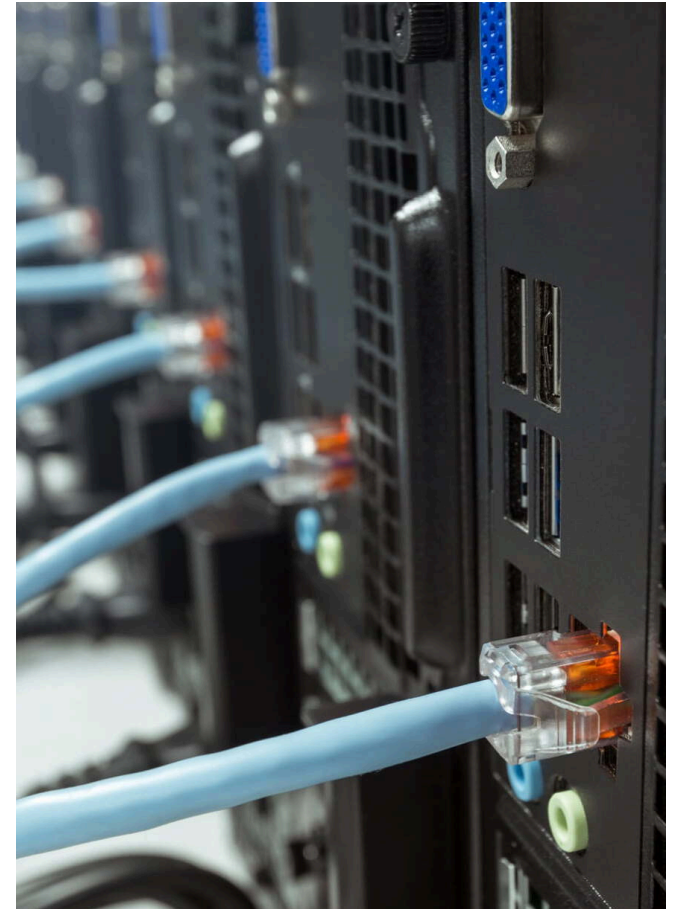
Networking

Networking

When HPE talks about Everything-as-a-Service, they mean it.

If you believe you must own, manage, and upgrade all those Aruba switches you have in all your MDFs and IDF, think again. HPE GreenLake for Aruba can deploy Aruba switches within your on-prem environment and fully manage them. While they are physically visible, they might as well be invisible because your own personnel won't have to toil with them. You don't pay for the switches, but only for the ports you use. There is no lease of financing agreement, just a simple subscription that you can adjust over time to meet your fluctuating needs and your equipment refresh, upcycle, and recycle timeframes can be changed at the time of renewal.

Customers often experience increased performance as well because the equipment is configured and managed by product experts that know how to fully optimize the equipment within your environment. Network-as-a-Service can accelerate the ROI of your networking investments and help enable the business outcomes you desire.



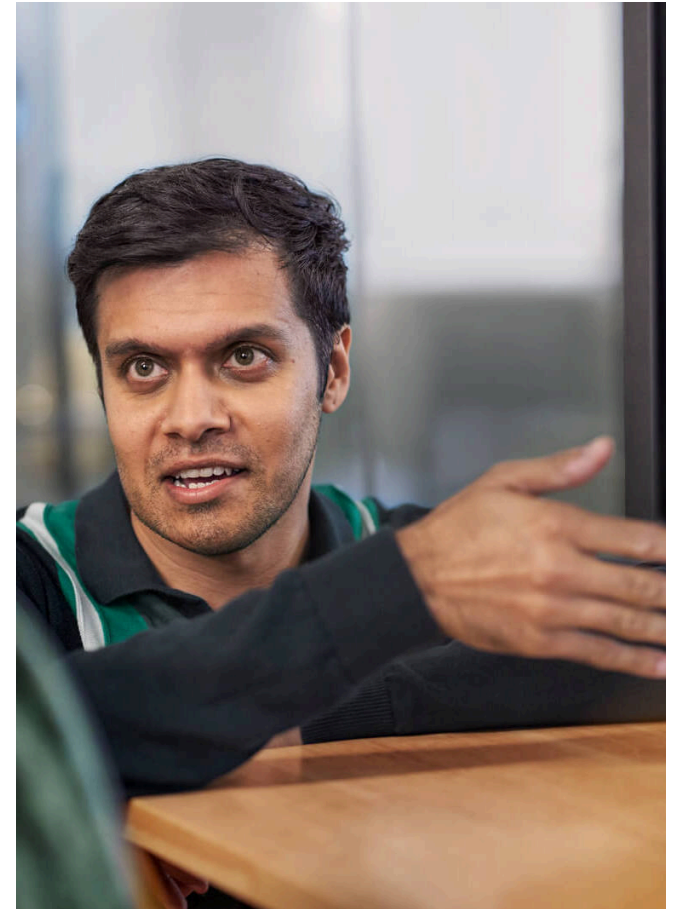
Compute Ops Management

Compute Ops Management

Enterprises have discovered the benefits of consuming their IT and leaving deployment and management to outside dedicated experts.

HPE GreenLake Cloud Operations Management takes on the responsibility of managing and optimizing hybrid cloud environments off your shoulders so you can focus on innovative initiatives. Their experts can monitor your environment and adjust as needed to maximize performance, security, and cost efficiency. All this while you focus on your own business core proficiencies.

You don't have to go all in though to discover these advantages because HPE GreenLake makes it easy to try it out on a small scale. If you already use HPE ProLiant servers, simply sign up for a 90-day evaluation for up to 10 devices. If indeed you realize the potential value, simply convert your free evaluation to a paid subscription of either Standard or Enhanced tier. An even easier step is to contact WEI and speak with one of our own IT consumption specialists that can take you through the process of what a transition to IT consumption would look like for you and answer any questions you might have.



Turn Your Questions Into Solutions

HPE GreenLake Provides HPE's Full Spectrum

As a longtime HPE partner, our specialists can perform a thorough assessment to determine which of your IT components are best suited for as-a-Service and forecast expected savings based on your business objectives. It is a new era of IT today, and HPE GreenLake offers a flexible channel to acquire all the potent HPE/Aruba services you already use every day.

Why WEI? We go further.

WEI is an expert in business technology improvement, helping clients optimize their technology environments and work efficiently. WEI understands customer goals to integrate strategy with technology solutions, and leverage their current IT environment into one company-wide model to increase utilization and efficiencies around their unique business processes.

WEI's clients benefit from a strong focus on customer satisfaction and attention to detail. From solution design through implementation, WEI's sales and technical team remains focused on providing unwavering support throughout a project. **Call 1-800-296-7837 to get started.**



**Hewlett Packard
Enterprise**



[Visit Our Blog](#)



[Contact Us](#)

Sources

1. Foundry research, commissioned by WEI, December 2021.
2. Based on analysis of known industry block storage-as-a-service offerings available as of March 2022 that are offered self-service
3. [HPE Storage Substantiation](#)

Thank You For Reading

HPE GreenLake Provides The Full Spectrum Of HPE Solutions

Call WEI at 1-800-296-7837